

OPERATOR'S MANUAL

Lawn Edger & Trimmer

Model 137-3.5-CA

CONTENTS

Page

- 2 Safety Rules
- 3 Edger Trimmer Features
- 4 Assembly Instructions
- 5 Operation and Maintenance
- 6 Edger Trimmer Parts Illustration
- 7 Edger Trimmer Parts List
- 8 Trouble Shooting



MCLANE

MANUFACTURING
INC.

7110 East Rosecrans Ave.
Paramount, CA 90723

Telephone
(562) 633-8158 (323) 636-8336

Safety Rules

DO NOT MODIFY EDGER

Unauthorized modification to the edger may impair the function and/or safety and affect edger life.

TRAINING

1. Read the Operating and Service Maintenance Instruction Manual carefully. Be thoroughly familiar with the controls and proper use of the equipment.
2. Never allow children to operate the edger-trimmer.
3. Keep area of operation clear of all persons, particularly small children and pets.

PREPARATION

1. Thoroughly inspect the area where edger-trimmer is to be used, and remove all stones, sticks, wire, bones and other foreign objects which might be picked up and thrown.
2. Do not operate edger-trimmer when barefoot or wearing open sandals. Always wear substantial foot wear, and pants or slacks that cover your legs when operating edger.
3. Check fuel before starting engine. Do not fill gasoline tank indoors, when engine is running, or while engine is still hot. Wipe off any spilled gasoline before starting engine.
4. Disengage cutterhead drive before starting engine.
5. Do not use edger-trimmer unless blade guard, belt guards and debris guard are properly in place.
6. Edge or trim only in daylight or in good artificial light.
7. Never operate equipment in wet grass. Always be sure of your footing; keep a firm hold on the handle and walk, never run.

OPERATION

1. Start the engine carefully. Keep hands and feet well away from blade.
2. Do not change engine governor setting or overspeed engine.
3. Wear safety glasses when operating edger-trimmer.
4. Keep clear of discharge opening at all times. Never direct discharge of any material toward bystanders nor allow anyone near machine while it is in operation.
5. Stop blade when crossing gravel drive, walks or roads.
6. After striking a foreign object, stop the engine and inspect edger-trimmer for damage; repair damage before starting engine.
7. Avoid loss of control or tipping on slopes and sharp corners by reducing speed.
8. If edger-trimmer should start to vibrate abnormally,

stop the engine and check for the cause. Vibration is generally a warning of trouble.

9. Stop the engine whenever you leave the edger-trimmer, and when making repairs or inspections.
10. When repairing or inspecting, make certain blade and all moving parts have stopped. Disconnect spark plug wire and keep wire away from plug to prevent accidental starting.
11. Do not run engine indoors.
12. Shut engine off and wait until blade comes to a complete stop before removing grass that may clog blade guard.
13. Watch out for traffic when working near roadways.
14. Stay alert for uneven sidewalks, holes in terrain or other hidden hazards when using edger-trimmer. Always push slowly over rough ground.
15. Remember, never operate edger-trimmer unless blade guard, belt guards and debris guard are properly in place.
16. Disengage power to cutterhead and stop engine before leaving edger-trimmer, before making repairs, inspections or adjustments, and when transporting or not in use.

MAINTENANCE AND STORAGE

1. Check blade mounting nut frequently for proper tightness.
2. Keep all nuts, bolts and screws tight to be sure equipment is in safe working condition.
3. Never store edger-trimmer with gasoline in the tank in a building where fumes may reach an open flame or spark. Be sure engine has cooled before storing in any enclosure.
4. To reduce fire hazard, keep engine free of grass, leaves or excessive grease.
5. After operating engine, never touch exhaust muffler until it has cooled completely.
6. Keep edger-trimmer in good operating condition and keep safety devices in place.

WARNING TO PURCHASERS OF INTERNAL COMBUSTION ENGINE EQUIPPED MACHINERY OR DEVICES

This equipment does not include a spark arrester muffler. If this equipment is used on any forest-covered land, brush-covered land or grass-covered land in the State of California, the law requires that a spark arrester be installed and in effective working order before using this equipment on such land. The spark arrester must be attached to the exhaust system and comply with Section 4442 of the California Public Resources Code. If this equipment is used in a state or national park or campground, a U.S.D.A. Forestry Department approved spark arrester muffler must be utilized.

Two Year Limited Warranty

For two years from purchase (60 days for commercial use) McLane Manufacturing Inc., will replace for the original purchaser, free of charge, any part or parts, found upon examination by any factory authorized service center, or by the factory in Paramount, California, to be defective in material or workmanship or both. All transportation charges on parts submitted for replacement under this warranty must be borne by purchaser. There are no other expressed warranties. Implied warranties, including those of merchantability and fitness for a particular purpose, are limited to two years from purchase and to the extent permitted by law. Any and all implied warranties are excluded. This is the exclusive remedy and liability for consequential damages. Any and all warranties are excluded to the extent exclusion is permitted by law. Some states do not allow limitations on how long an implied warranty lasts, and some states do not allow the exclusion limitation of consequential damages to the above limitation and exclusion may not apply to you. This warranty gives you specific legal rights and you may also have other rights which vary from state to state.

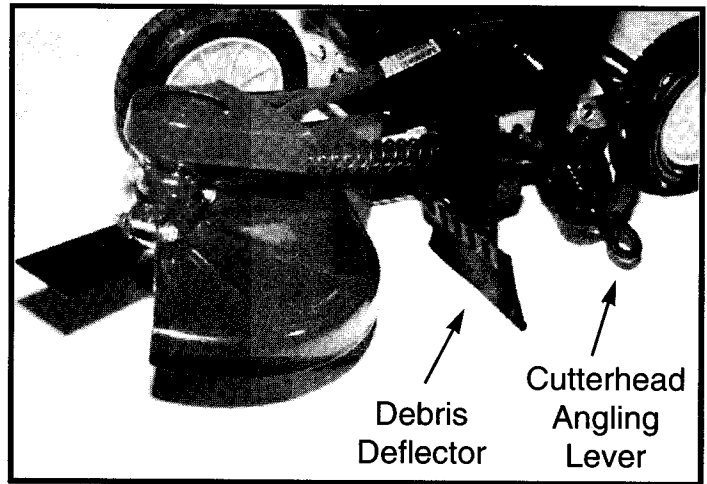
It is your responsibility to follow the maintenance instructions described in the owner's manual. Routine service (cleaning, blade sharpening) is your responsibility.

McLane Manufacturing, Inc.

Note: Operator abuse and improper assembly of product is not covered by any written or implied warranty. Read your owner's manual carefully.

LAWN EDGER AND TRIMMER FEATURES

Trimming Position



ASSEMBLY

TOOLS REQUIRED: 7/16" Wrench, Pliers, Screwdriver

NOTE: Reference to left or right side of machine is from operator's position at the handle, facing forward.

The lawn edger, except the handle and throttle control, is fully assembled, packed and shipped in one container.

ATTACHING THE HANDLE

1. Remove handle brace, nuts, and bolts. Align the handle, lower support, and handle brace holes. Use all six nuts and bolts. Leave bolts loose until Steps 2 and 3 are completed. (Fig. 1).
2. Install control rod into upper and lower pivot holes and secure with cotter pins (Fig. 1). Oil pivots lightly before installing rod.
3. Move clutch-depth lever into rear notch of quadrant on handlebars. Move cutterhead angling lever to top notch of quadrant.
4. Remove spark plug wire from spark plug. Move throttle to **OFF** position. Check clutch operation by pulling recoil starter rope. If blade turns when depth lever is in top notch, loosen handle bolts and pull towards operator. Snug bolts and check clutch operation again.

- IMPORTANT NOTE -

Make sure blade does not turn when lever is in top notch – disengaged

5. Slip on the handle grips.
Tighten bolts.

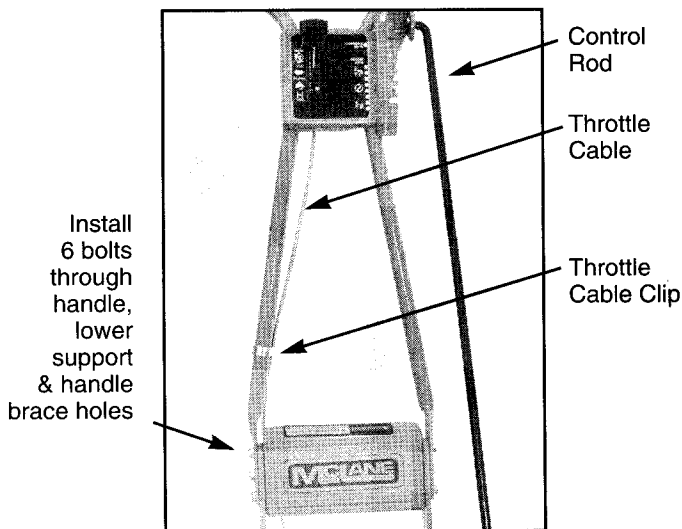


Fig. 1

INSTALLING THE THROTTLE WIRE

1. If the throttle cable is not attached to the engine carburetor, follow instructions in the engine operation manual. Some throttle cables can not be attached before shipping.

FILL ENGINE WITH OIL

1. **NOTE:** There is no oil in the engine.
2. Follow instructions in the Engine Manual for correct grade of oil, oil filling and oil changes.
3. **Do Not Mix Oil With Gasoline.**

Check oil level of engine every time edger-trimmer is used. An improper oil level can cause extensive internal damage to engine.

FUEL SPECIFICATION

1. Follow fueling instruction in the engine manual.



CAUTION

Handle fuel with care – it is highly flammable. Use only approved fuel container. Never add fuel while engine is running. Fill fuel tank outdoors with extreme care. Never fill fuel tank indoors. Replace gasoline cap securely and wipe up all spilled fuel.

Always clean area around fuel cap before removing it to prevent excessive amounts of dirt from entering fuel system. Also insure that fuel storage container you are using is clean and in good condition.

CORRECT ENGINE OPERATION



CAUTION

Before starting engine, become familiar with all controls. Read this Operator's Manual thoroughly. Always check engine oil level before starting engine.



WARNING

Care should be taken to avoid inhaling exhaust gasses as they contain carbon monoxide gas which is colorless and odorless. Carbon monoxide is a dangerous gas that can cause unconsciousness and is potentially lethal. Do not run engine in confined areas such as closed garage.

OPERATION

 **Read and Heed Safety Rules on page 2.**

NOTE: Because the rotating blade can throw dirt or debris, wear safety glasses when operating the edger.

ADJUSTING CUTTERHEAD ANGLE

Before starting engine adjust cutterhead angle. The cutterhead angling lever, located on the left hand side of the frame. (See Fig. 9), enables the operator to position the blade horizontally for trimming (Fig. 9) or choose several vertical positions for edging.

WARNING: Never adjust cutterhead angle when engine is running.

CLUTCH AND DEPTH LEVER SETTINGS

Clutch and Depth lever (Fig. 6) is used to engage and disengage the drive belt which operates the blade. It is also used to regulate the depth of edging and height of trimming.

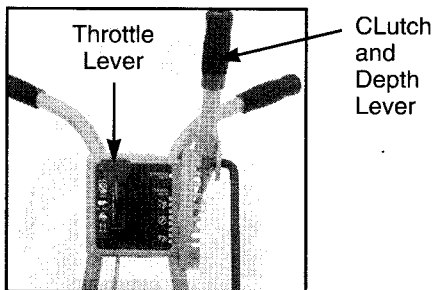


Fig. 6

THROTTLE LEVER

1. The throttle lever is located at the right of the control panel and is used to regulate engine speed. (See Fig. 6)
2. Use FAST position when edging or trimming; use SLOW position to idle the engine.

STARTING THE EDGER

1. Be sure the clutch lever is in the rear DISENGAGED position before starting engine.
2. Move throttle lever to choke position. Pull rewind starter handle rapidly. Repeat if necessary. Move throttle up to running position.
3. Move Clutch and Depth lever forward to engage drive belt and blade. Notches in base of lever permit adjusting depth of cut for edging and height of trimming.
4. To stop edger, disengage Clutch and Depth lever and move throttle to stop position.

WHEEL POSITIONING

1. The wheel adjusting spacer should be centered between the wheel and right hand frame when edging in the vertical position. The wheel must be placed against the right hand frame when edging with the cutterhead in the angle or horizontal position. (See Fig. 7)

WARNING: Do not change wheel position when engine is running.



2. Remove spacers from front axle and slide front wheel

MAINTENANCE

toward the right frame. Replace spacers on the front axle between front wheel and left frame.

CAUTION: Before starting the engine be sure the wheel and cutterhead are positioned so the blade will not strike the wheel.

BLADE MAINTENANCE

 **CAUTION** 
Sharp edges of edger-trimmer blade can cut you during blade maintenance or adjustment. Use suitable covering over cutting edges of blade top prevent bodily harm.

BLADE CHANGE

1. Place a 5/16" Allen wrench on the inside of cutterhead shaft and a 3/4" wrench on the blade nut, turn to loosen nut. Remove outer washer and old blade.
2. Replace blade with only McLane blade (available in 3-pack). Place outer washer the same direction as removed and tighten nut as snug as possible.

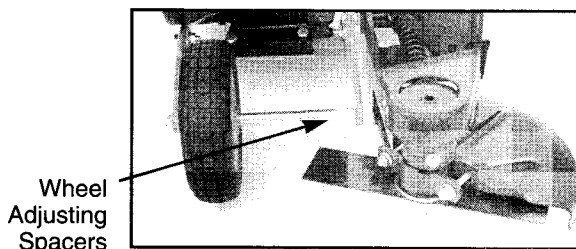


Fig. 7

LUBRICATION

1. The cutter head body needs occasional greasing. Use #2 multi-purpose grease.
2. The cutter head mandrel has two precision sealed bearings that do not need lubrication.

Replace air cleaner element, clean cooling system, clean and reset spark plug gap and remove carbon deposits at regular intervals.

Use #2 Multi-purpose Grease

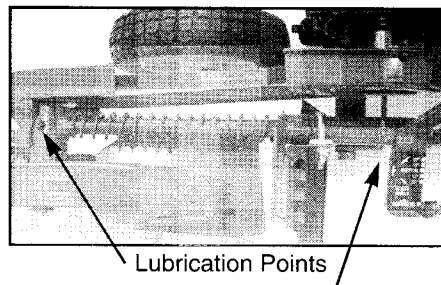
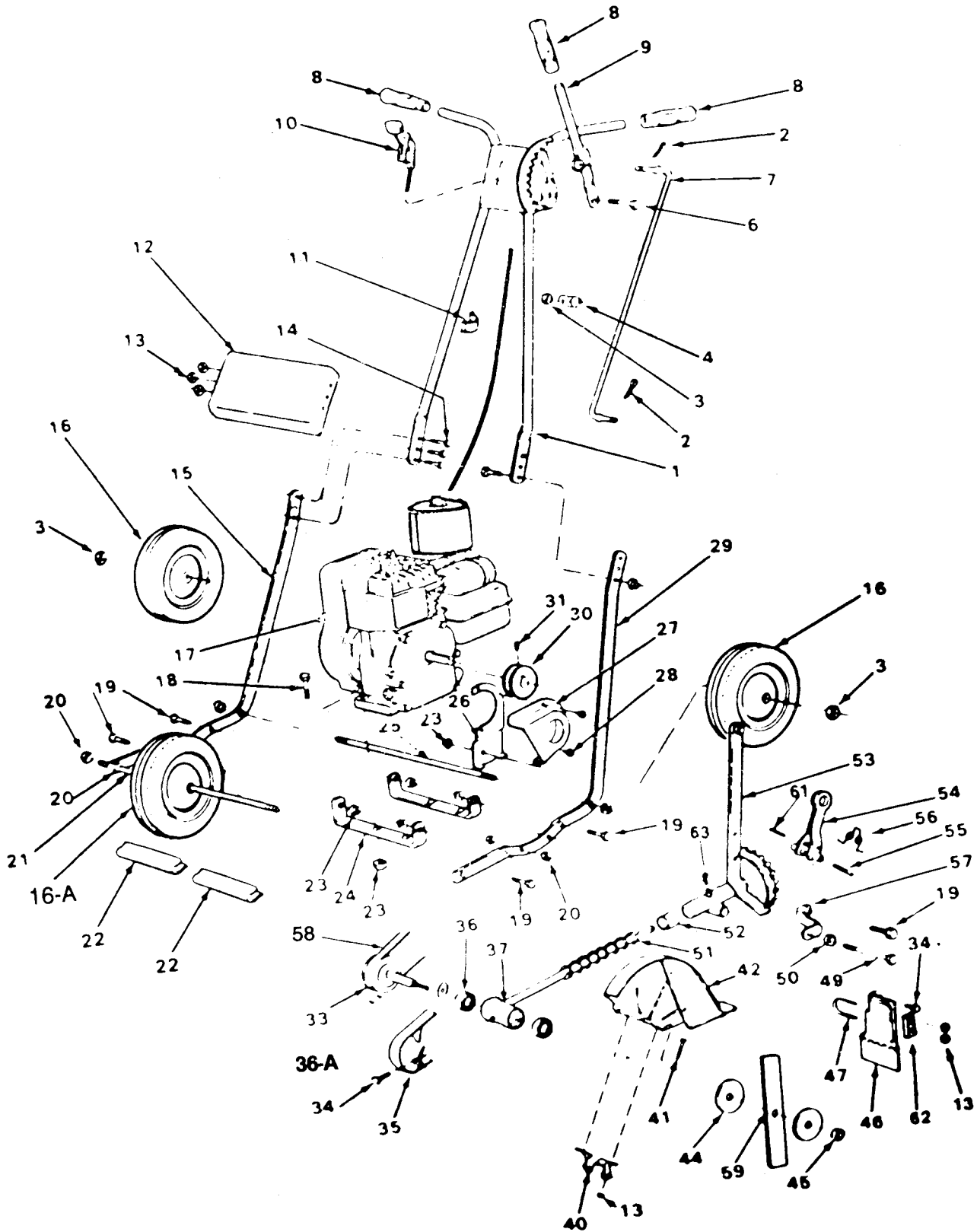


Fig. 9

LUBRICATION

Lubricate four times a year at regular intervals. (See Fig. 9) The cutter head mandrel has two precision bearings that do not need lubrication.

LAWN EDGER AND TRIMMER PARTS ILLUSTRATION MODEL 137-3.5-CA



TROUBLE SHOOTING CHART

PROBLEM	CAUSE
1. Engine fails to start	<ul style="list-style-type: none">A. Check fuel tank for gas.B. Spark plug lead wire disconnected.C. Throttle control lever not in the starting position.D. Check spark plug.*E. Carburetor improperly adjusted. Engine flooded. Remove spark plug, dry the plug, crank engine with plug removed, and throttle in off position. Replace spark plug and lead wire and resume starting procedures.F. Old/stale gas. Drain and refill with fresh gas.
2. Hard Starting or loss of power.	<ul style="list-style-type: none">A. Spark plug wire loose.B. Carburetor improperly adjusted.*C. Dirty air cleaner.*
3. Operation erratic.	<ul style="list-style-type: none">A. Dirt in gas tank. Drain, clean, and refill.B. Dirty air cleaner.*C. Water in fuel supply. Drain and refill.D. Vent in gas cap and/or carburetor plugged. Clear vent.E. Carburetor improperly adjusted.*
4. Occasional skip (hesitates) at high speed.	<ul style="list-style-type: none">A. Spark plug fouled, faulty, or gap too wide.*B. Carburetor improperly adjusted.*C. Dirty air cleaner.*
5. Idles poorly.	<ul style="list-style-type: none">A. Carburetor idle speed too low.*B. Spark plug gap too close.*C. Carburetor idle mixture adjustment improperly set.*
6. Engine overheats.	<ul style="list-style-type: none">A. Adjust Carburetor*B. Remove any obstructions from air passages in shrouds.C. Clean cooling fins.D. Fill crankcase to proper oil level.

Notice to customers in the State of California– The engine on this unit is not equipped with a spark arresting muffler.

WARNING

USE OR OPERATION OF THIS ENGINE ON ANY FOREST COVERED, BRUSH COVERED, OR GRASS COVERED LAND WITHOUT A STATE APPROVED SPARK ARRESTOR IN EFFECTIVE WORKING ORDER CONSTITUTES A VIOLATION OF THE LAW OF THE STATE OF CALIFORNIA.

*Note: For repairs beyond the minor adjustments listed above, please contact your local Lawn Mower Service Shop.